

## Getting to know your Community Foundation...



---

### Like a Tree...

- Rooted
- Strong
- Stable
- Complex
- Growing
- Diverse
- Enduring
- Safe
- Historic
- Fruitful
- Necessary for our Future

### Fastest Growing Form of Philanthropy in the United States!

- Many donors interested in their community
- Community Foundation safeguards and cultivates donors gifts as a collection of Charitable Endowed Funds
- Grant Investments are made from endowed funds to meet community charitable needs.

### Planting

#### *Sewing the Seed of Giving*

- Donors use a Community Foundation to create named charitable funds or make gifts to existing funds to meet their charitable interests.
- Provide the opportunity to create a personal legacy to the community.
- Can tailor giving to their personal needs.
- Can create a gift to honor or memorialize a loved one.

### Cultivation

#### *Growth & Preservation of Donor Intent*

- Donors' gifts are endowed to exist in perpetuity.
- Investment and Spending Policies ensure perpetual support to charitable interests.
- Assistance in gift planning and growing endowments.
- Recognition
- Guardian of donor intent. Make grants according to donor designations.

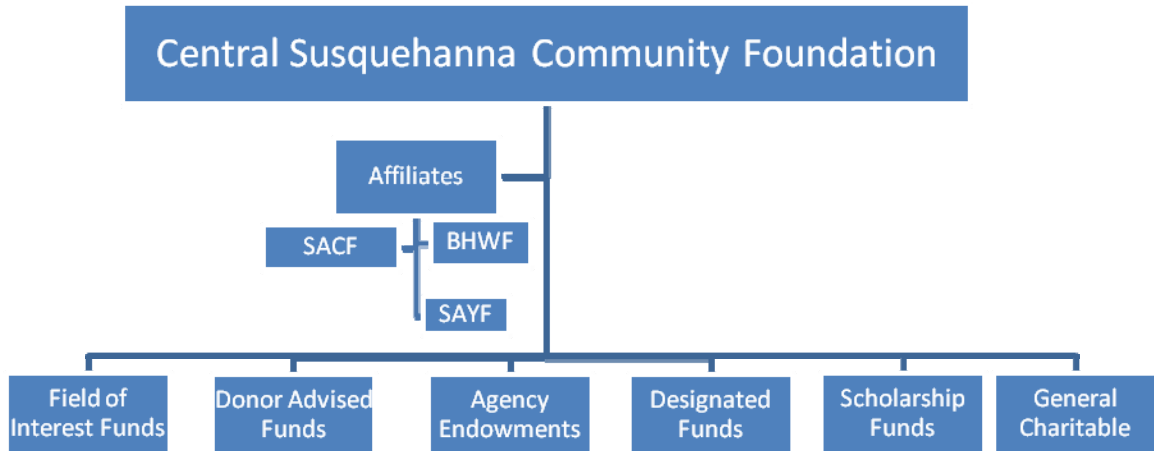
### Sharing...

#### *Grant Investments in the Community*

- Grants according to fund restrictions; purpose and geography.
- Strategic impact.
- Return on Investment.
- Changing Lives.
- Securing the Future.

# Central Susquehanna Community Foundation Family Tree

Three Affiliates and more than 65 named endowed



funds.

.....1999.....	.....2004.....	.....2006.....	.....2010.....
Foundation established by the sale of the Berwick Hospital – Serves Berwick and surrounding 23 municipalities. Regionalized Community	Foundation format adopted, serving Lower Luzerne, Columbia, Montour, Union, Northumberland, and Snyder Counties.	Affiliation of Selinsgrove Area Youth Foundation and Sunbury Area Health Foundation – expanding donor opportunities.	Annually makes community grant investments approximating \$2 Million per year.

## Central Susquehanna Community Foundation Grant investments for the betterment of our region.

- Affiliates – grant investments in their geographic area in accordance with restrictions.
- Named Funds – grant investments as designated by donors.
- CSCF brings State, Federal, and Private Foundation \$\$ to our region.

## What's your legacy?

### Scholarship

Select the school district(s) and other parameters to create a scholarship fund.

### Agency Endowment/Designated

Support forever the nonprofit organization(s) most important to you.

### Unrestricted/General Charitable Purpose

Provide flexible support that will forever meet changing needs.

### Donor Advised

Be actively involved in grant making, recommend the causes you wish to support

### Field of Interest

Choose to support a "field of interest", the causes you care about most; the environment, arts, health...

### **Transfer of Wealth (TOW)**

CSCF Service Region

Columbia County = \$1.01 Billion

Montour County = \$300 Million

Northumberland County = \$1.1 Billion

Snyder County = \$450 Million

Union County = \$410 Million

2005-2015: capture 5% of wealth transferred

**=\$128 million**

5% payout across our region

**=\$6.4m annually**

### **Help Us Spread the Word....**

1. CSCF administer of the Berwick Health and Wellness Fund, Selinsgrove Area Youth Foundation and the Sunbury Area Community Foundation, along with more than 65 other charitable funds.
2. Each Affiliate and Charitable Fund has its own restrictions – what & where.
3. Residents of our service area can create new funds for almost any charitable purpose under CSCF and/or Affiliates.
4. We hope you will be an ambassador for CSCF!

### ***Still Have Questions...***

**Contact the CSCF Staff at 570.752.3930, or toll free at 866.454.6692**

For **good**. For **ever**: